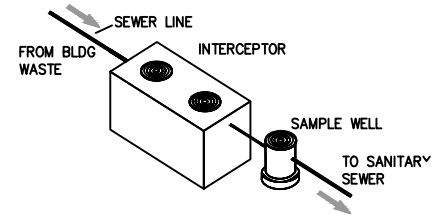
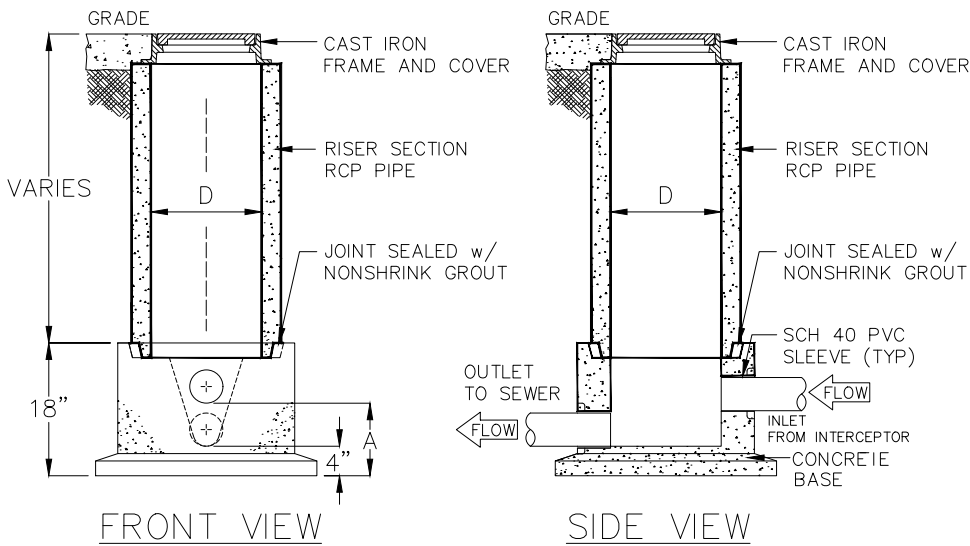


Grease or Grit Trap Sample Well & Sample Port Specifications

The purpose of the sample well or sample port is to collect a wastewater sample from the discharge side of the grease or grit trap. The well must be sized to fit a sample jar in the waste stream to collect a sufficient volume of wastewater. The City of Beaumont Water Utilities Department approves of the following device or approved equal for sample well installation. The sample well must be accessible.

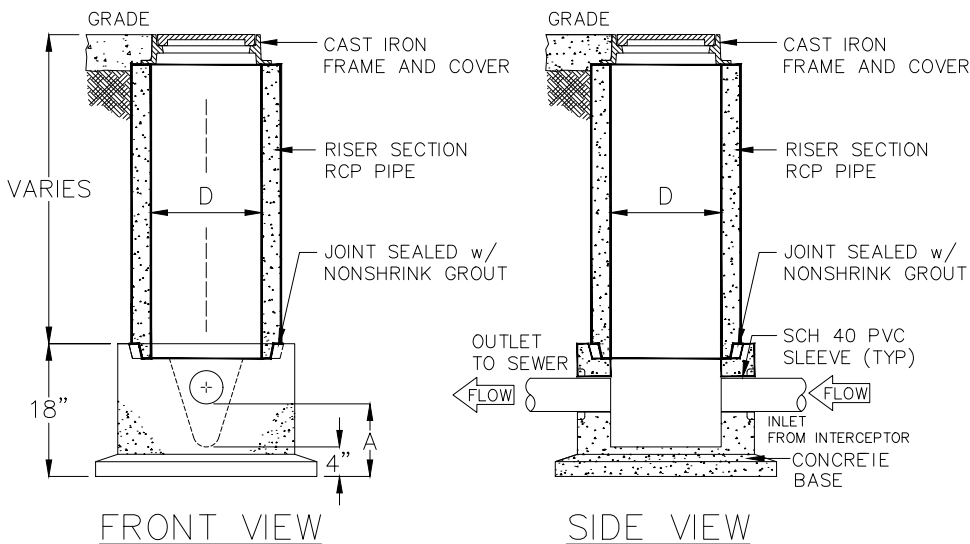
Any deviation from this design must be submitted with a detailed plan in advance and be approved by Water Utilities prior to installation. The City of Beaumont reserves the right to refuse or terminate water service to any facility that fails to abide by city ordinance.

NEW CONSTRUCTION



1. SAMPLE WELL MUST BE INSTALLED UNDER A PLUMBING PERMIT.
2. USE 15" T&G R.C.P. FOR INSTALLATION 6'-0" DEEP AND LESS.
3. USE 24" T&G R.C.P. FOR INSTALLATION GREATER THAN 6'-0" DEEP. (STD RING AND M.H. COVER REQUIRED.)
4. SET SAMPLING WELL IN A CIRCULAR OR SQUARE CONCRETE PAD (1'-0" GREATER THAN OUTSIDE DIAMETER OF PIPE.)
5. INSIDE INSTALLATION NOT PERMITTED.
6. LAWN INSTALLATION MUST BE 4" ABOVE FINISHED GRADE.
7. DRIVE & SIDEWALK INSTALLATION MUST BE BROUGHT TO FINISHED GRADE.
8. TO BE INSTALLED ON PRIVATE PROPERTY, IN AN ACCESSIBLE LOCATION TO CITY PERSONNEL.

RENOVATION OF EXISTING CONSTRUCTION



DIAMETER "D"	IN & OUT PIPE SIZE	"A"
15"	4"	11"
15"	6"	9"
18"	4"	11"
18"	6"	9"

Effective Date: December 3, 2020